

V1 Oct 19

**10 Day TIMETABLE: UET20319 Certificate II in ESI – Powerline Vegetation Control VENUE: ArbTrack – 13/17-23 Keppel Drive, Hallam**

Day	Date	Unit / Module	Statement of Attainment	Certificate of Completion	Theory/Prac	Comments/ PPE:	
DAY 1	Mon 9 <sup>th</sup> Nov	8 am	<b>UEENEEE101A</b>  <b>PUAWHS002 &amp; PUAFIR210</b>	Apply Occupational Health and Safety regulations, codes and practices in the workplace  Maintain safety at an incident scene & Prevent Injury <i>(This training is blended with above unit)</i>	<i>VESI Safety Framework</i> <i>Manual Handling</i> <i>Hearing Conservation</i>  <i>Available</i>	Theory	<i>NO PPE REQUIRED</i>
		8am	<b>UETTDREL13</b>	Comply with sustainability, environmental and incident response policies and procedures	<i>VESI Enviro Framework</i>		
DAY 2	Tues 10 <sup>th</sup> Nov	10.30am	<b>UETTDREL14</b>	Working safely near live electrical apparatus as a non-electrical worker	<i>Safe Approach. Dist. – Vegetation Work</i>	Theory & Practical	High Vis PPE, safety glasses, hard hat, steel cap- lace up work boots
			<b>UETTDRRF01</b>	Apply ESI safety rules, codes of practice and procedure for work on or near electrical apparatus	<i>Available</i>	Theory only	
			→	→	<i>Safe To Approach SWER</i>	Theory & Practical	
DAY 3	Wed 11 <sup>th</sup> Nov	8 am	<b>**UETTDRCV23</b>	Plan the removal of vegetation up to vegetation exclusion zone near electrical apparatus	<i>No</i>	Theory & Practical	High Vis PPE, safety glasses, hard hat, steel cap- lace up work boots
			<b>**UETTDRCV27</b>	Monitor safety compliance of vegetation control work in an ESI environment	<i>No</i>		
		* 1pm	<b>UETTDRRF09</b>	Apply access procedures of vegetation control work in an ESI environment	<i>No</i>	Theory Only	
DAY 4	Thurs 12 <sup>th</sup> Nov	8 am	<b>HLTAID001</b>	Provide cardiopulmonary resuscitation	<i>No</i>	Theory & Practical	High Vis PPE, safety glasses, hard hat, steel cap- lace up work boots
			<b>**UETTDRRF10</b>	Provide first aid in an ESI environment	<i>No</i>		
		1pm	<b>AHCCHM201</b>	Apply Chemicals under supervision	<i>No</i>		
DAY 5	Fri 13 <sup>th</sup> Nov	8 am	<b>RIIWHS205D</b>	Control traffic with stop-slow bat	<i>No</i>	Theory & written assessment Prac set up 1,2 & 3	High Vis PPE, safety glasses, hard hat, steel cap- lace up work boots <b>Start at Hallam and finish at Dallas Brooks Park, Upper Beaconsfield</b>
		ALL DAY	<b>RIIWHS302D</b>	Implement traffic management plan	<i>No</i>		

V1 Oct 19

**10 Day TIMETABLE: UET20319 Certificate II in ESI – Powerline Vegetation Control VENUE: ArbTrack – 13/17-23 Keppel Drive, Hallam**

\*Please note that these start times are an approximate only \*\*Denotes that the unit has pre-requisites

Date		Unit / Module	Statement of Attainment	Certificate of Completion	Theory/Prac	Comments/ PPE:	
DAY 6	Mon 16 <sup>th</sup> Nov	8 am	AHCMOM213	Operate and maintain chainsaws	Available	Theory  NO PPE REQUIRED	
		*12pm	**AHCPCM203	Fell small trees	No		
Day 7	Tues 17 <sup>th</sup> Nov	8am  ALL DAY	AHCMOM213	Operate and maintain chainsaws	Available	Practical Theory if required	ALL DAY AT DALLAS BROOKS PARK Beaconsfield Upper High Vis PPE, safety glasses, hard hat, steel cap- lace up work boots Chaps/ Chainsaw Pants (NO LOOSE CLOTHING)
			**AHCPCM203	Fell small trees	No		
Day 8	Wed 18 <sup>th</sup> Nov	8 am	FWP HAR2206	Operate a mobile chipper / mulcher	No	Theory & Practical	High Vis PPE, safety glasses, hard hat, steel cap- lace up work boots Chaps/ Chainsaw Pants (NO LOOSE CLOTHING) Start at Hallam and finish at Dallas Brooks Park, Upper Beaconsfield
			**UETDRVC31	Operate specialist equipment at ground level near live line electrical apparatus	No		
Day 9	Thurs 19 <sup>th</sup> Nov	8 am	**UETDRVC25	Use elevated platform to cut vegetation above ground level near live electrical apparatus	No	Theory	NO PPE REQUIRED
			**UETDRVC33	Apply pruning techniques to vegetation control near live electrical apparatus	No		
Day 10	Fri 20 <sup>th</sup> Nov	8 am	**UETDRRF03	Perform EWP rescue	No	Theory & Practical	High Vis PPE, safety glasses, hard hat, steel cap- lace up work boots Chaps/ Chainsaw Pants (NO LOOSE CLOTHING) Start at Hallam and finish at Dallas Brooks Park, Upper Beaconsfield
			UETDRRF08	Perform EWP controlled descent escape	No		
		*10:30am	**UETDRVC25	Use elevated platform to cut vegetation above ground level near live electrical apparatus	No	Practical	
			**UETDRVC33	Apply pruning techniques to vegetation control near live electrical apparatus	No		

\*Please note that these start times are an approximate only \*\*Denotes that the unit has pre-requisites

V1 Oct 19

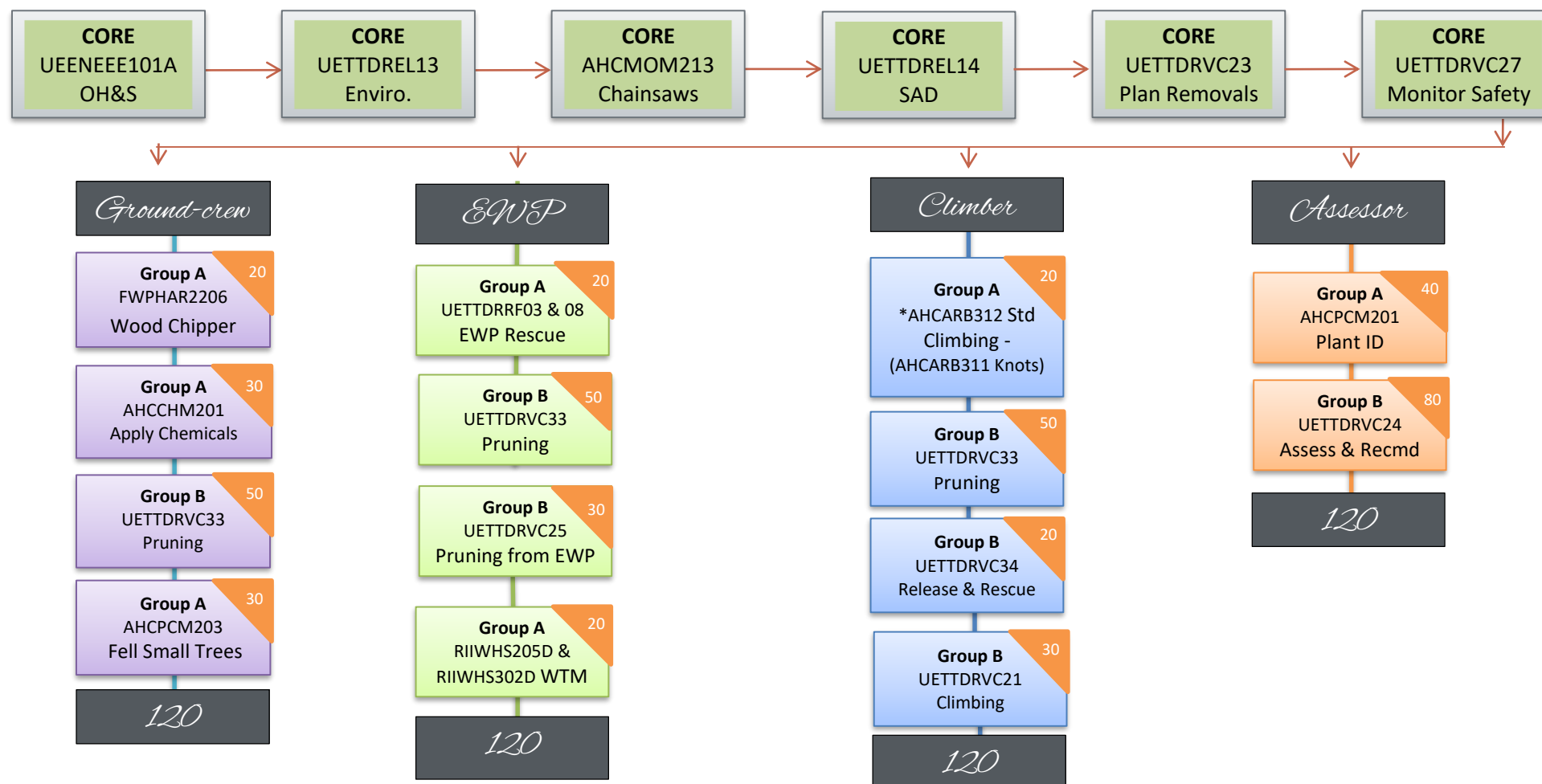
**10 Day TIMETABLE: UET20319 Certificate II in ESI – Powerline Vegetation Control VENUE: ArbTrack – 13/17-23 Keppel Drive, Hallam**

### Pre-requisites

#### *UET20319 Certificate II in ESI – Powerline Vegetation Control.*

Code	Name	Pre-requisite
UEENEEE101A	Apply Occupational Health and Safety Regulations, Codes and Practices in the Workplace	Nil
UETTDREL13	Comply with Sustainability, Environmental and Incident Response Policies and Procedures	Nil
UETTDREL14	Working Safely near Live Electrical Apparatus as non-Electrical Worker	Nil
UETTDRRF01	Apply ESI Safety Rules, Codes of Practice and Procedures for Work on or near Live Electrical Apparatus.	Nil
AHCMOM213	Operate and Maintain Chainsaws	Nil
UETTDRVC23	Plan the Removal of Vegetation up to Vegetation Exclusion Zone Near Live Electrical Apparatus	UEENEEE 101A, UETTDREL13, UETTDREL14
UETTDRVC27	Monitor Safety Compliance of Vegetation Control Work in an ESI Environment	UEENEEE 101A, UETTDREL13, UETTDREL14, UETTDRVC23
UETTDRRF03	Perform EWP Rescue	HLTAID001
UETTDRRF08	Perform EWP Controlled Descent Escape	Nil
HLTAID001	Provide Cardiopulmonary Resuscitation	Nil
UETTDRRF10	Provide First Aid in an ESI Environment	HLTAID001
UETTDRRF09	Apply Access Procedures to work on or near electrical network infrastructure	Nil
UETTDRVC25	Use Elevated Work Platform to Cut Vegetation Above Ground Level Near Live Electrical Apparatus	UEENEEE 101A ,UETTDREL13, UETTDREL14, UETTDRVC23, UETTDRVC27, UETTDRVC33
UETTDRVC33	Apply pruning techniques to vegetation control near live electrical apparatus	UEENEEE 101A ,UETTDREL13, UETTDREL14, UETTDRVC23, UETTDRVC27
UETTDRVC31	Operate Specialist Equipment at Ground Level Near Live Electrical Apparatus	UEENEEE 101A, UETTDREL13, UETTDREL14, UETTDRVC23, UETTDRVC27
UETTDRVC21	Use Climbing Techniques to Cut Vegetation Above Ground Level Near Live Electrical Apparatus	UEENEEE 101A, UETTDREL13, UETTDREL14, UETTDRVC23, UETTDRVC27, UETTDRVC33, UETTDRVC34
UETTDRVC34	Undertake release and rescue from a tree near live electrical apparatus	UEENEEE 101A, UETTDREL13, UETTDREL14, UETTDRVC23, UETTDRVC27
FWPHAR2206	Operate a Mobile Chipper/Mulcher	Nil
PUAWHS002	Maintain Safety at an Incident Scene	PUAFIR210
PUAFIR210	Prevent Injury	Nil
RIIWH5205D	Control Traffic with Stop-Slow Bat	Nil
RIIWH5302D	Implement Traffic Management Plan	Nil
AHCPCM203	Fell small trees	AHCMOM213 – Operate and maintain chainsaws
AHCCHM201	Apply Chemicals Under Supervision	Nil

### UET20319 Certificate II in ESI – Powerline Vegetation Control: Qualification Pathways



**Cert II Packaging Rules-** All candidates must satisfactorily complete the core units before attempting the electives. Electives must total 120 points as a minimum, made up from Group A and B or solely Group B. However, a maximum of 70 points must come from Group A and a minimum of 50 points must come from Group B.

**For Additional Training Requirements refer to Power Supply Authority Training Matrix**